

Welcome to East Spring Secondary School

Secondary 3

Meet-the-Parents Session

Friday, 24 Feb 2023

7.00pm – 9.00pm



East Spring Secondary School

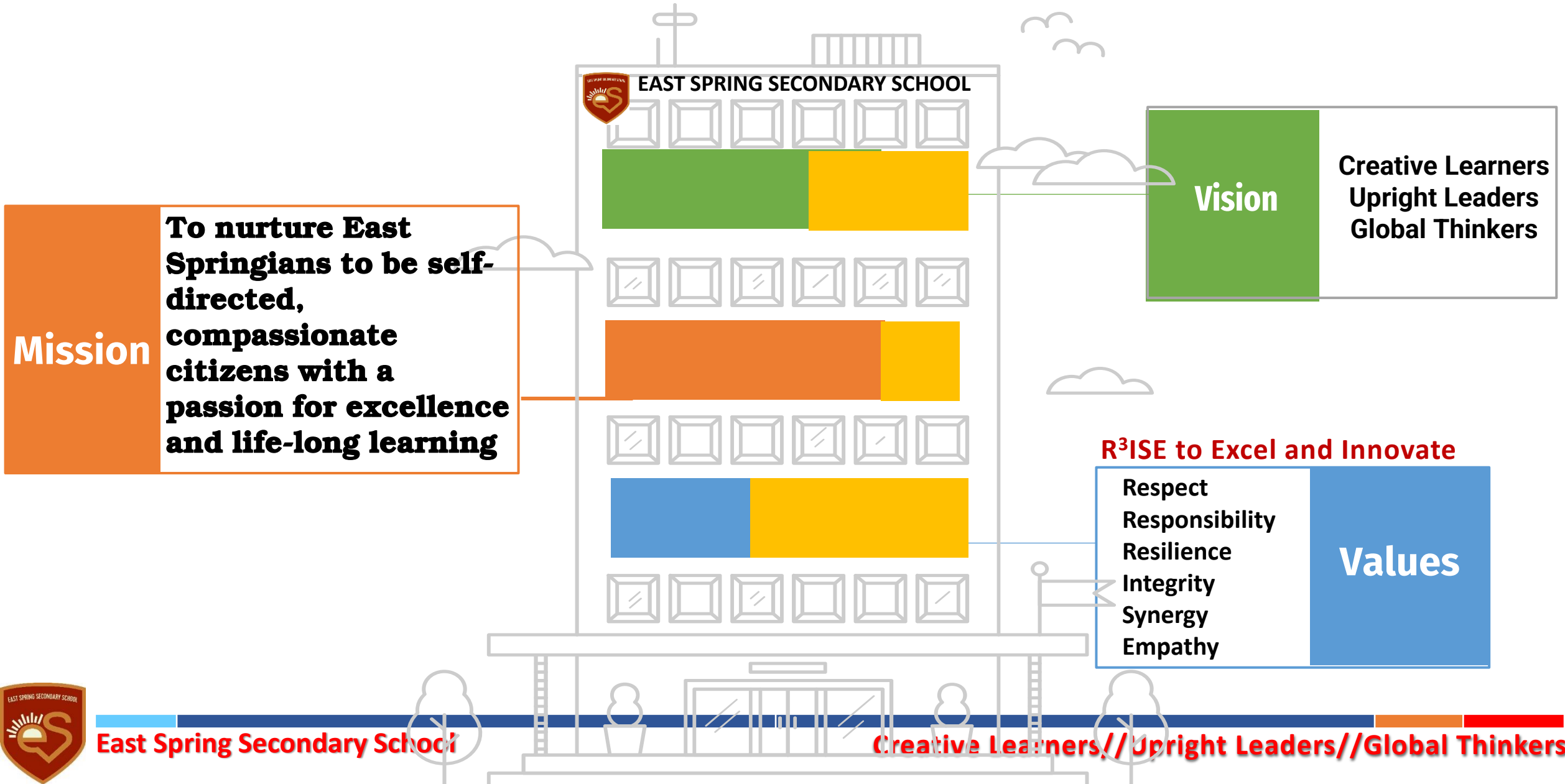
Creative Learners//Upright Leaders//Global Thinkers

Secondary 3 Meet-the-Parents Session School Leaders' Address

24 Feb 2023



East Spring Secondary School








Post-secondary pathways and criteria

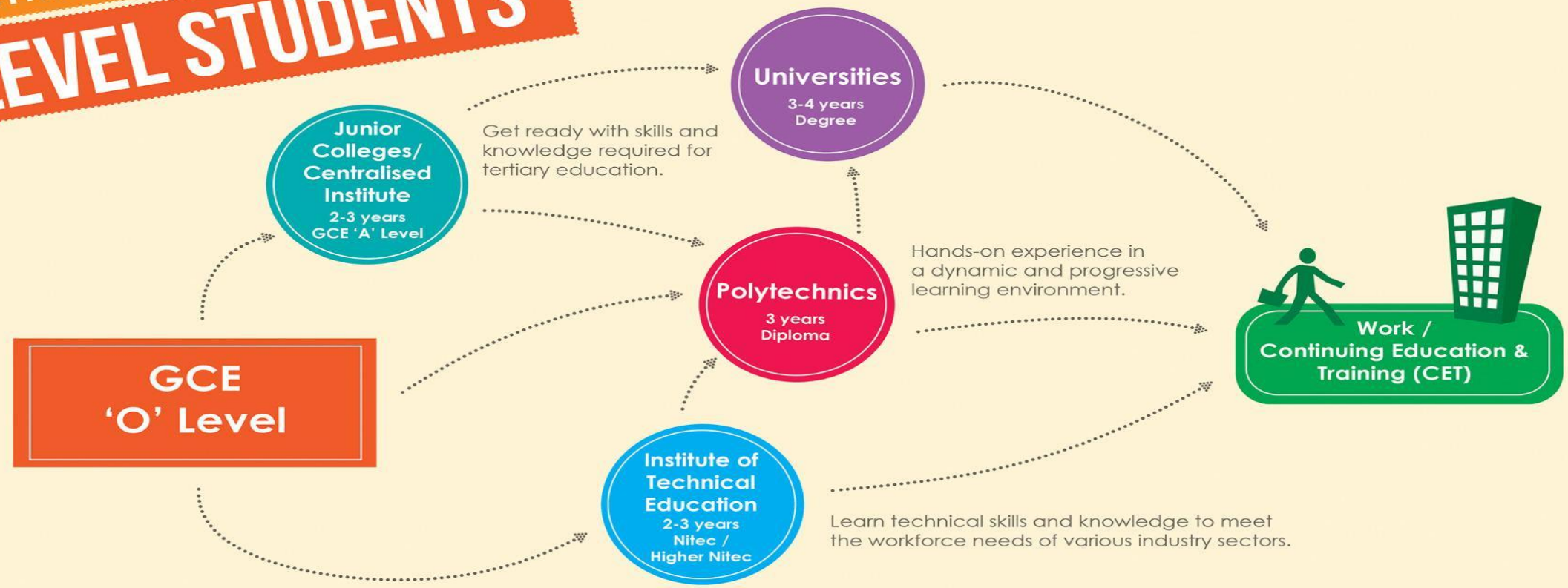




Post-Secondary Options	More Info on Post-Secondary Courses	
MOE Post-Secondary Education Booklet – information on post-secondary options available	Joint Intake Exercise (JIE) Booklet 2023 - applications for ITE Nitec and Higher Nitec (DPP - Direct Entry Scheme to Poly programme) courses after release of N Level results	Joint Admissions Exercise (JAE) Booklet 2023 – applications to JC/MI/Poly after release of O Level results
		



MULTIPLE PATHWAYS FOR 'O' LEVEL STUDENTS



HOW TO APPLY

<div data-bbox="152 1078 331 1185"></div> <div data-bbox="343 1078 496 1192"> L1R5 AGGREGATE </div> <div data-bbox="496 1085 675 1156"> 20 OR LESS for JCs </div> <div data-bbox="675 1085 1082 1156"> * Joint Admissions Exercise (JAE) </div> <div data-bbox="38 1192 331 1335"> JUNIOR COLLEGES/ CENTRALISED INSTITUTE </div> <div data-bbox="343 1192 496 1335"> L1R4 AGGREGATE </div> <div data-bbox="496 1206 675 1278"> 20 OR LESS for CI </div> <div data-bbox="675 1163 1082 1249"> * Direct School Admission-JC (DSA-JC) Exercise </div>	<div data-bbox="1146 1078 1324 1185"></div> <div data-bbox="1082 1192 1312 1335"> POLYTECHNICS </div> <div data-bbox="1337 1085 1821 1156"> * Joint Admissions Exercise (JAE) </div> <div data-bbox="1337 1142 1821 1206"> * Joint Polytechnic Special Admissions Exercise (JPSAE) </div> <div data-bbox="1337 1213 1821 1278"> * Direct Polytechnic Admission (DPA) Exercise </div>	<div data-bbox="1898 1078 2076 1185"></div> <div data-bbox="1847 1192 2076 1335"> INSTITUTE OF TECHNICAL EDUCATION </div> <div data-bbox="2102 1085 2509 1156"> * Nitec-Joint Intake Exercise (JIE) by ITE </div> <div data-bbox="2102 1163 2509 1228"> * Higher Nitec-Joint Admission Exercise (JAE) </div>
---	---	---

For more information, visit www.moe.gov.sg/education/admissions/

Key Pathways for 4 Exp/ 5N(A)

Junior College (JC) / Millennia Institute (MI)

- 2-year (JC) or 3-year (MI) academic programme, leading to GCE A-Level Exams
- Eligibility Criteria:
 - ☐ **JC: L1R5 \leq 20**
& Subject Requirements
 - ☐ **MI: L1R4 \leq 20**
& Subject Requirements

Polytechnic

- 3-year course in a specialised field, leading to a Diploma
- Eligibility Criteria:
 - ☐ **ELR2B2 \leq 26**
 - ☐ Course-specific requirements
 - ☐ Usually include C6 or better in English and Math

Important Note: Eligibility does NOT guarantee you a place!



Aggregate Computation for JC / CI Courses

L1	First Language - English / Higher Mother Tongue
R5	Relevant Subject 1 - best of Humanities
	Relevant Subject 2 - best of Mathematics / Science
	Relevant Subject 3 - next best from Humanities / Mathematics / / Science
	Relevant Subjects 4 and 5 - from the next 2 best GCE 'O' Level subjects excluding CCA



Subject Requirements for JC

Subject	Requirement
English Language	A1 to C6
Mother Tongue Language (MTL) Or MTL Syllabus B Or Higher MTL	A1 to D7 Merit or Pass A1 to E8
Maths Or Additional Maths	A1 to D7 A1 to D7



L1R5 Cut-off for Junior Colleges (2022)

S/N	Junior College	Arts	Science / IB	S/N	Junior College	Arts	Science / IB
1	Anderson Serangoon JC	11	10	10	National JC	8	7
2	Anglo-Chinese JC	9	8	11	Raffles Institution	5	4
3	Anglo-Chinese School (Indep)	-	5	12	River Valley High School	9	8
4	Catholic JC	13	13	13	St. Andrew's JC	11	9
5	Dunman High School	9	8	14	St. Joseph's Institution	-	7
6	Eunoia JC	8	6	15	Tampines Meridian JC	13	13
7	Hwa Chong Institution	5	4	16	Temasek JC	9	8
8	Jurong Pioneer JC	16	14	17	Victoria JC	8	7
9	Nanyang JC	6	5	18	Yishun Innova JC	19	19

Note: The cut-off can vary from year to year.

EL Grade must be C6 or better, MTL & MA/AM Grade must be D7 or better

*Source: JAE Booklet 2023
page 108*



Poly: ELR2B2 subject requirements for the 4 course types

Type	ELR2B2 – A	ELR2B2 – B	ELR2B2 – C	ELR2B2 – D
EL	English (Compulsory!)			
R2	A.Math Art Chinese/ Malay / Tamil Humanities D&T Math Geography History Literature Music POA	A.Math or Math (Compulsory!)		
		Art Humanities Geography History Literature Music POA	Biology Chemistry D&T F&N Physics Sci (Phy, Chem) Sci (Chem, Bio) Sci (Phy, Bio)	Art Biology Chemistry D&T F&N Physics Sci (Phy, Chem) Sci (Chem, Bio) Sci (Phy, Bio)
B2	Best 2 other subjects excluding CCA			



ELR2B2 Cut-off for Some Polytechnic Courses (2022)

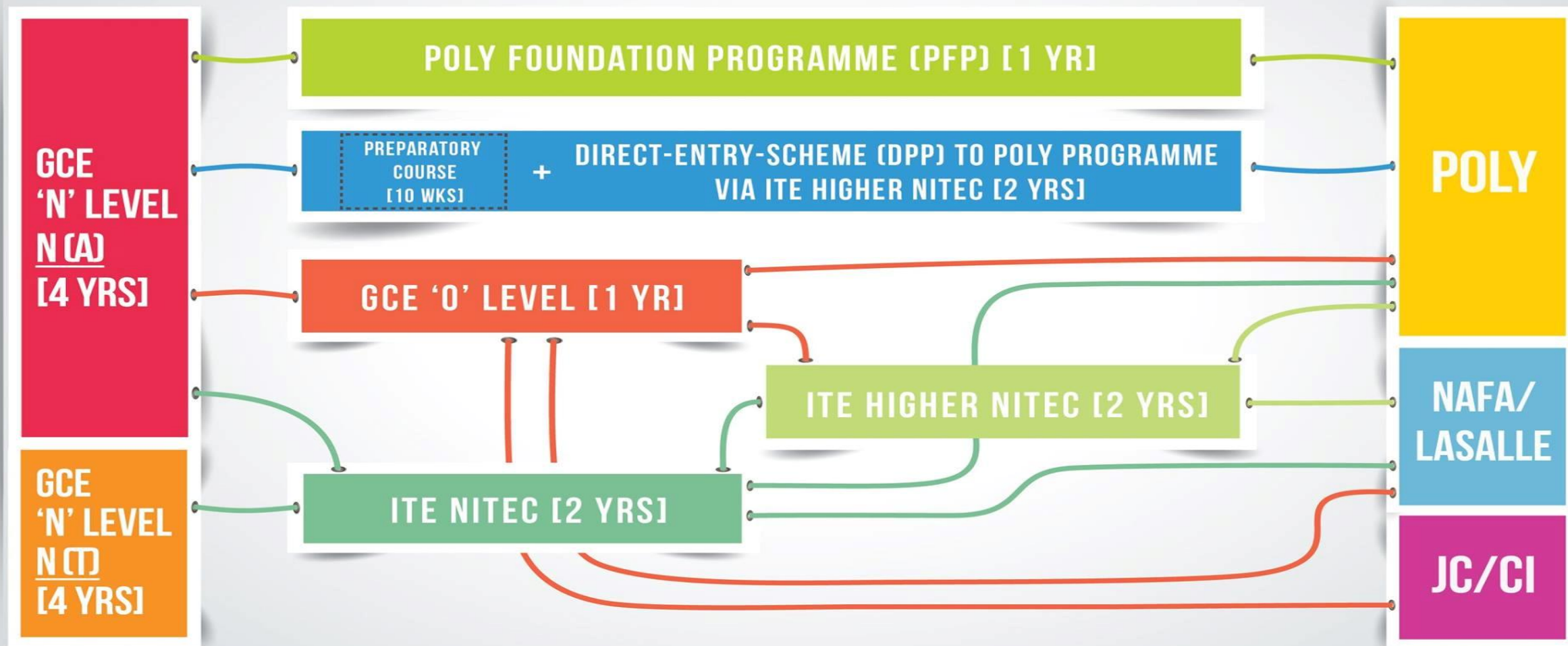
Course	College Campus	ELR2B2 Cut-Off
Accountancy and Finance	Temasek Poly	13
Cybersecurity and Digital Forensics	Temasek Poly	12
Pharmaceutical Science	Temasek Poly	11
Interior Architecture and Design	Temasek Poly	14
Psychology Studies	Temasek Poly	8
Common Business Programme, leading to e.g. Dip in Law and Management	Temasek Poly	15
Food Science and Nutrition	Nanyang Poly	12
Common Engineering Programme, leading to e.g. Dip in Robotics and Mechatronics	Nanyang Poly	24
Nursing	Nanyang Poly	28

Source: JAE Booklet 2023





MULTIPLE PATHWAYS FOR N(A) AND N(T) STUDENTS



For more information on the DPP and the PFP, please visit these websites:

- Direct-Entry-Scheme to Poly Programme (DPP)
www.ite.edu.sg/wps/portal/definitely-des

- Poly Foundation Programme (PFP)
www.polytechnic.edu.sg/pfp



Ministry of Education
SINGAPORE

Key Pathways for N(A)

1. Poly Foundation Programme

Eligibility Criteria:

- ☐ ELMAB3 \leq **12** (before CCA Bonus Points)
- ☐ Met course-specific entry requirements (E.g EL Grade 2 or better for selected courses)

(Note: Eligibility does not guarantee you a place in a PFP course)



2. Direct Entry Scheme Poly Programme

- 2 year Higher Nitec programme at ITE,
and a 10 week preparatory course
- Eligibility Criteria:
 - ☐ ELMAB3 <= **19** (before CCA Bonus Points)
 - ☐ Met course-specific entry requirements

(Note: Eligibility does not guarantee you a place in a DPP Higher Nitec course)



3. GCE O-Level via Secondary 5

➤ Eligibility Criteria:

- ☐ ELMAB3 \leq **19** (before CCA Bonus Points)
- ☐ English, Math and Best 3 Subjects \leq 5



Key Pathways for N(T)

ITE NITEC

- 2 year course, leading to a Certification in a specialised field
- More than 90 full-time courses offered
- Eligibility Criteria:
 - ❑ Course-specific requirements, usually based on **Best 4 Subjects**

Important Note: Eligibility does NOT guarantee you a place!



Cut-off for ITE 2 –year Nitec Courses (2021)

Course	College Campus	Cut-Off*
Applied Food Science	ITE College East	8
Business Services	ITE College East	11
Chemical Process Technology	ITE College East	12
Electrical Technology (Lighting & Sound)	ITE College East	16
Community Care & Social Services	ITE College East	17
Nursing	ITE College East	15
Opticianry	ITE College East	14
Video Production	ITE College Central	9
Digital Animation	ITE College Central	8

***Based on best 4 subjects**

Note: Also need to check subject prerequisites, e.g. pass in EL, Maths. Source: JIE Booklet 2023





Supporting Our Students



Consultation with teachers (non-graduating classes)

- ✓ There are no formal lessons after official curriculum time. For graduating classes, we have Academic Support Programme (ASP) in the afternoon.
- ✓ For Sec 1 to 3, students can approach their subject teachers to arrange for consultation after school if they need more help on a certain topic/subject. The teacher can arrange for a small group consultation session.

Do encourage your child to approach the teacher if he/she has questions.



Managing homework load on CCA Days

Question: is it possible to have no homework on CCA days?

- ✓ As students in a class are in different CCAs, which have different CCA schedules, it would not be practical to rule out homework on CCA days.
- ✓ If students are given homework to complete within the day, and the students have CCA training on that day, please approach the teacher to allow extension for submission.



Some suggestions on how you can support your child

- ✓ Read textbooks before lessons
- ✓ Practise 1 hour of Maths questions every day
- ✓ Watch 30 mins of news every day
- ✓ Write bite-sized/section notes every week
- ✓ Check out the meaning of and form sentences for 5 new words every day (from story books, magazines, newspapers)



Some suggestions on how you can support your child

✓ Use of Personal Learning Device (PLD):

Typically students use their PLD almost every day, for example, to access lessons and assignments posted on Student Learning Space, and access videos recorded by teachers.

This supports independent learning as students progress to upper secondary and beyond.

It's good for parents to keep up with child's online activities.



How to get Practice Papers for new syllabuses

One set of Specimen Papers for each new syllabus available in SEAB website (for 3 years) – O Level



This link is meant for your own child's practice. Do not circulate the papers and the links, or make commercial gains.



Typically for a new syllabus, there would be no existing sets of papers. Schools take a close look at one set of specimen papers and start to set papers according to the syllabus.

On their own initiative, HODs exchange papers with other schools to build up a new set of papers, so that they can provide to the students for timed practice.

Teachers will advise on some of the topical TYS that are still relevant for practice.



How to get Practice Papers for new syllabuses

Specimen Papers for N Level - N(A)	Specimen Papers for N Level - N(T)
	

The link is meant for your own child's practice. Do not circulate the papers and the links, or make commercial gains.



Support for Students' Mental Health and Well-being

Mental well-being is part of the curriculum for Character and Citizenship Education (CCE) 2021 Syllabus. Teachers teach strategies to strengthen mental well-being and cope with negative emotions:

- Mental Fitness routines such as calming strategies
- Reframing Automatic Negative Thoughts
- Gratitude and appreciation for peers, teachers, family members. Every class designs their own Gratitude Wall.
- Termly well-being check-in survey.

Students can request to speak to FTs
Year Heads, AYHs, Counsellors



**Alone we can do so little,
together we can do so much**

- Helen Keller

