



LEARN, GROW, SUCCEED



The background features a bright blue sky with faint, light-colored rays emanating from the top. Below the sky, a horizon line separates the sky from a landscape composed of various colorful, geometric shapes. On the left, there are green and yellow blocks, some resembling trees with brown trunks. In the center, there are a tall red block and a purple block. On the right, there are yellow, orange, and blue blocks, also with some tree-like shapes. The overall style is clean, modern, and colorful.

LEARNING EMPOWERS SUCCESS

HANDS-ON, MINDS-ON, HEARTS-ON™ EDUCATION

Career-Ready,
Future-Ready
Courses

Authentic
Learning
Environment

Vibrant
Campuses

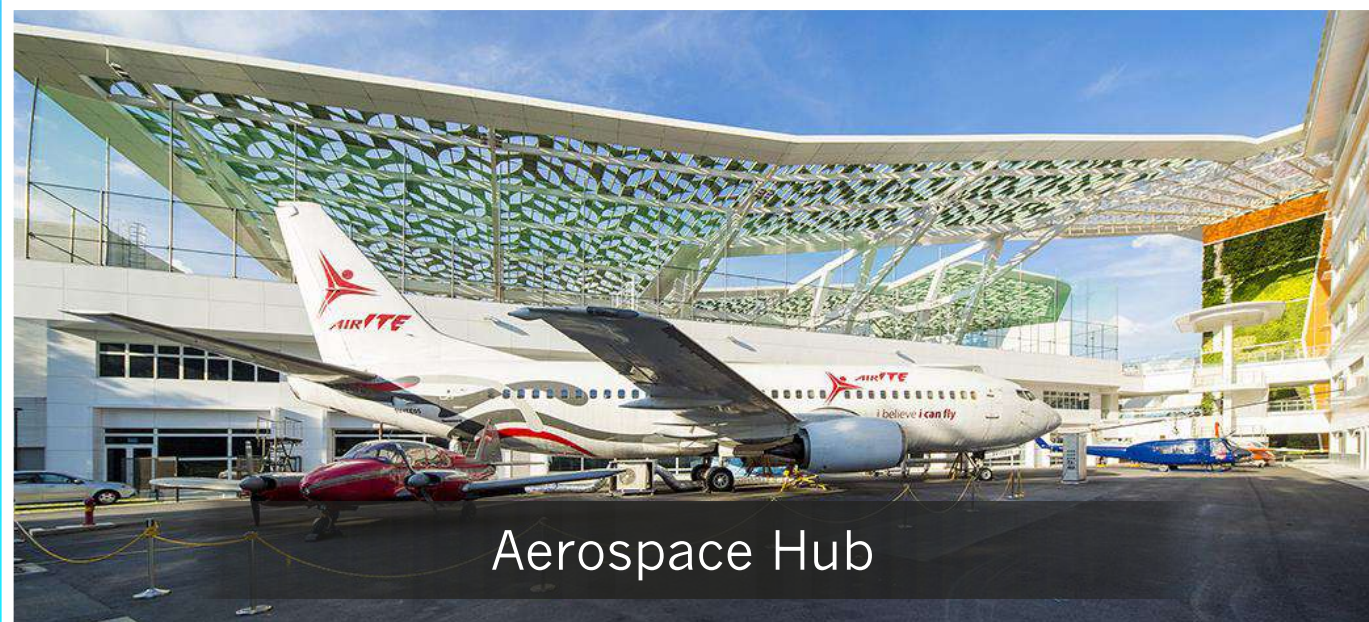
State-of-the-Art
Training Facilities



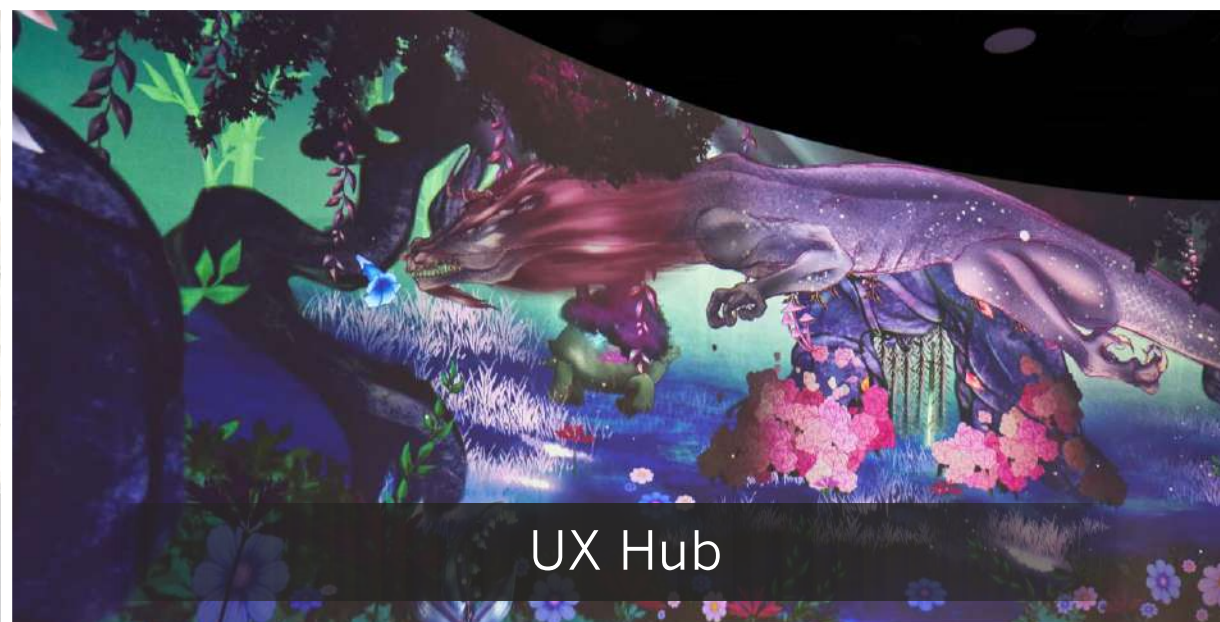
Explore many possibilities that excite!



EXAMPLES OF AUTHENTIC LEARNING AT ITE COLLEGE CENTRAL



Aerospace Hub



UX Hub



Smart Manufacturing Hub



Retail Training Centre

EXAMPLES OF AUTHENTIC LEARNING AT ITE COLLEGE EAST



Centre for Healthcare Simulation



Beauty Therapy Training Centre



Artificial Intelligence Lab



HortiTech Hub

EXAMPLES OF AUTHENTIC LEARNING AT ITE COLLEGE WEST



Urban Mobility Centre



Hotel West



Training Kitchen



Built Environment Hub

PROGRESSION PATHWAYS, TRAINING PROGRAMMES AND COURSES

ITE PROGRAMMES



8

Nitec



52

*2-Year
Higher
Nitec*



42

*3-Year
Higher
Nitec*



8

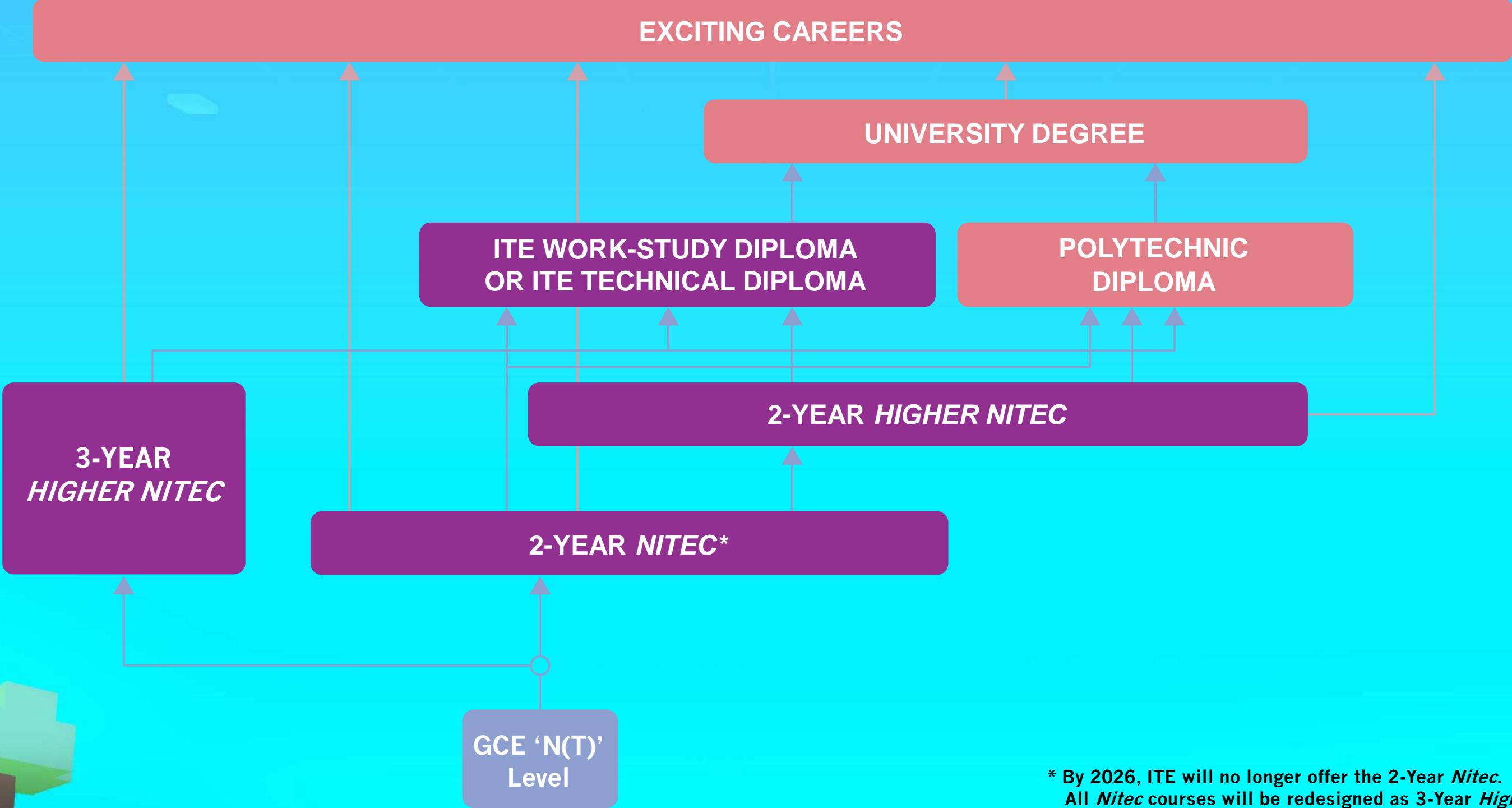
**Technical
Diploma**



45

**Work-
Study
Diploma**

PROGRESSION PATHWAYS



* By 2026, ITE will no longer offer the 2-Year *Nitec*. All *Nitec* courses will be redesigned as 3-Year *Higher Nitec* courses.

EARLY ADMISSIONS EXERCISE (EAE)

Do you have a special talent or passion for a course in ITE?
Secure your place with us before your GCE 'N' or 'O' Level exams!

Apply for a course based on your
aptitude and interest

Attend an **interview** and/or
aptitude test, if selected

Receive a **Conditional Offer** for
admission to ITE before your GCE
'N' or 'O' Level exams!

Meet the **Minimum Entry
Requirements** of the course and
you can join ITE



Scan to view
EAE video



“I have always been interested in how technology shapes our daily lives. To pursue this passion, I chose to apply for the EAE in *Higher Nitec* in Business Information Systems. This course equips me with the technical know-how needed to excel in the tech industry. It serves as a strong foundation for realising my long-term aspiration of becoming a respected IT leader capable of making an impact on the world!”

Jacob Goh Yu Siang
***Higher Nitec* in Business Information Systems**
ITE College East

WHAT TO PREPARE FOR EAE APPLICATION

1. Write up (not more than 100 words)

- Describe your interests and talents which are related to the course
- Give examples of your participation in Competitions related to the Course (eg, ignITE Skills Challenge)
- Share with us your participation in MOE Elective Modules, Enrichment Courses
- Impress us with your CCA and achievements
- Tell us about your participation in work attachment, community/volunteer work, school/personal activities/projects

2. Prepare softcopies of relevant supporting documents

- Certificates of Achievements
- Testimonials (work)
- Portfolios (if any)
- CCA records
- Others



ACE YOUR INTERVIEW



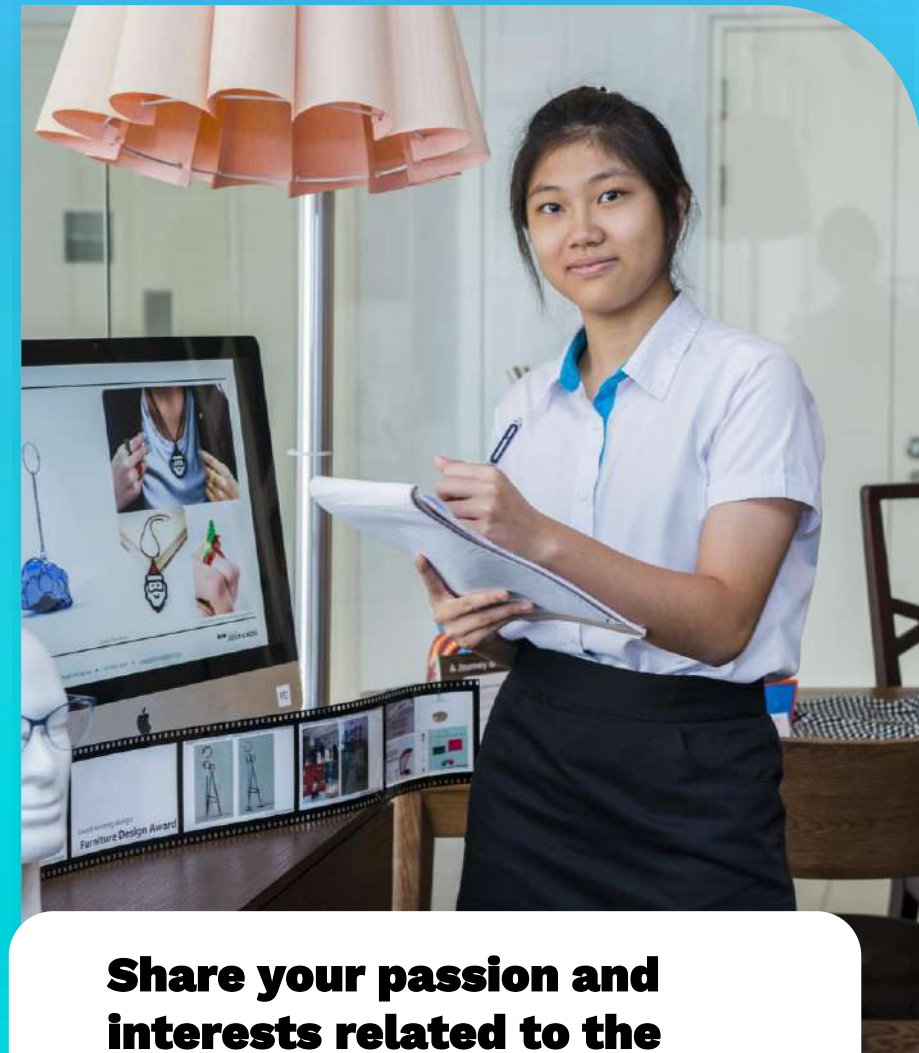
Bring Along Supporting Documents

- Certificates of Achievements
- Awards and Testimonials
- Portfolio of relevant work/projects



Demonstrate your understanding of the Course and Industry

- Check the Modules of the Course
- Do Online Research



Share your passion and interests related to the course

- Read up what you wrote in the application
- Be well prepared for interview

3-YEAR *HIGHER NITEC* PROGRAMME

To build deeper skills beyond *Nitec*

Features



Attain a *Higher Nitec* qualification in 3 years



N(A) and N(T) students can apply with existing *Nitec* entry requirements



Gain exposure to modules in their sector in Year 1 before specialising later



'O' Level and DPP students with Minimum Entry Requirements join Year 2 directly



2 integrated internships – 3 months in Year 2 and 6 months in Year 3



“The three-year *Higher Nitec* in IT Applications Development programme ignited my passion and interest in the field of IT technology. I was able to apply the tools I have learnt to overcome real work-life challenges effectively during my internship. Being in the accelerated pathway also trains me in my perseverance and time management.”

CAROLINE GOH QIAN HUI
3-Year *Higher Nitec* in Applications Development
ITE College West



<https://for.edu.sg/nitec-and-3-year-higher-nitec>

Scan to find out more!

3-YEAR *HIGHER NITEC* COURSES AGGREGATE POINTS (2025 intake)

Based on Best 4 GCE 'N' Level subjects, including pre-requisite subjects and bonus points[^].

3-Year <i>Higher Nitec</i> Course	Aggregate Points
Business & Services	
Accounting	5 (CC) 6 (CE) 6 (CW)
Business Administration	3 (CC) 4 (CE) 3 (CW)
Event Management	5 (CC)
Passenger Services	5 (CC) 9 (CE)
Sport Management	4 (CC) 6 (CE) 6 (CW)
Tourism	6 (CW)
Customer Experience <small>NEW</small>	<small>NEW</small>
Beauty & Wellness Management	7 (CE)
Hairdressing & Salon Management	6 (CE)
Logistics & Supply Chain Management	8 (CE)
Retail & Online Business	5 (CC) 8 (CE) 8 (CW)

CC - College Central / CE - College East / CW - College West

[^] Pre-requisite subjects: Subjects that are compulsory to pass in order to qualify for a course | Bonus points: CCA bonus points



3-YEAR *HIGHER NITEC* COURSES AGGREGATE POINTS (2025 intake)

Based on Best 4 GCE 'N' Level subjects, including pre-requisite subjects and bonus points[^].

3-Year <i>Higher Nitec</i> Course	Aggregate Points
Electronics & Info-Comm Technology	
AI Applications	3 (CC) 5 (CW)
Business Information Systems	5 (CE)
Cyber & Network Security	4 (CC) 5 (CE) 5 (CW)
Data Engineering	7 (CW)
Electronics Engineering	7 (CC) 16 (CE) 12 (CW)
Immersive Applications & Game	3 (CC)
IT Applications Development	4 (CC) 13 (CE) 14 (CW)
IT Systems & Networks	6 (CC) 13 (CE) 15 (CW)
Operational & Information Technology ^{NEW}	NEW
Security System Integration	8 (CE) 10 (CW)

CC - College Central / CE - College East / CW - College West

[^] Pre-requisite subjects: Subjects that are compulsory to pass in order to qualify for a course | Bonus points: CCA bonus points



3-YEAR *HIGHER NITEC* COURSES AGGREGATE POINTS (2025 intake)

Based on Best 4 GCE 'N' Level subjects, including pre-requisite subjects and bonus points[^].

3-Year <i>Higher Nitec</i> Course	Aggregate Points
Health Sciences (CE)	
Community Care & Social Service	6
Opticianry	6
Nursing	15

CE – College East

[^] Pre-requisite subjects: Subjects that are compulsory to pass in order to qualify for a course | Bonus points: CCA bonus points

3-YEAR *HIGHER NITEC* COURSES AGGREGATE POINTS (2024 intake)

Based on Best 4 GCE 'N' Level subjects, including pre-requisite subjects and bonus points[^].

3-Year <i>Higher Nitec</i> Course	
Engineering	
Applied Food Science	6 (CE)
Bio-Chemical Technology	3 (CE)
Chemical Process Technology	7 (CE)
Architectural Technology ^{NEW}	NEW
Civil & Structural Engineering Design ^{NEW}	
Integrated Mechanical & Engineering ^{NEW}	
Facilities Management & Engineering ^{NEW}	
Landscape Management & Design ^{NEW}	
Vertical Transportation ^{NEW}	
Electrical Engineering ^{NEW}	

CE - College East

[^] Pre-requisite subjects: Subjects that are compulsory to pass in order to qualify for a course | Bonus points: CCA bonus points

3-YEAR *HIGHER NITEC* COURSES AGGREGATE POINTS (2025 intake)

Based on Best 4 GCE 'N' Level subjects, including pre-requisite subjects and bonus points[^].

3-Year <i>Higher Nitec</i> Course	Aggregate Points
Design & Media (CC)	
Communication Design ^{NEW}	NEW
Film & Video Production ^{NEW}	
Interior & Product Design ^{NEW}	
Technical Theatre & Production ^{NEW}	
Visual Merchandising ^{NEW}	

CC – College Central

[^] Pre-requisite subjects: Subjects that are compulsory to pass in order to qualify for a course | Bonus points: CCA bonus points

3-YEAR *HIGHER NITEC* COURSES AGGREGATE POINTS (2025 intake)

Based on Best 4 GCE 'N' Level subjects, including pre-requisite subjects and bonus points[^].

3-Year <i>Higher Nitec</i> Course	Aggregate Points
Hospitality (CW)	
Hospitality Operations NEW	NEW
Pastry & Baking NEW	
Culinary Arts NEW	

CW – College West

[^] Pre-requisite subjects: Subjects that are compulsory to pass in order to qualify for a course | Bonus points: CCA bonus points

FULL-TIME 2-YEAR *NITEC* COURSES AGGREGATE POINTS (2025 intake)

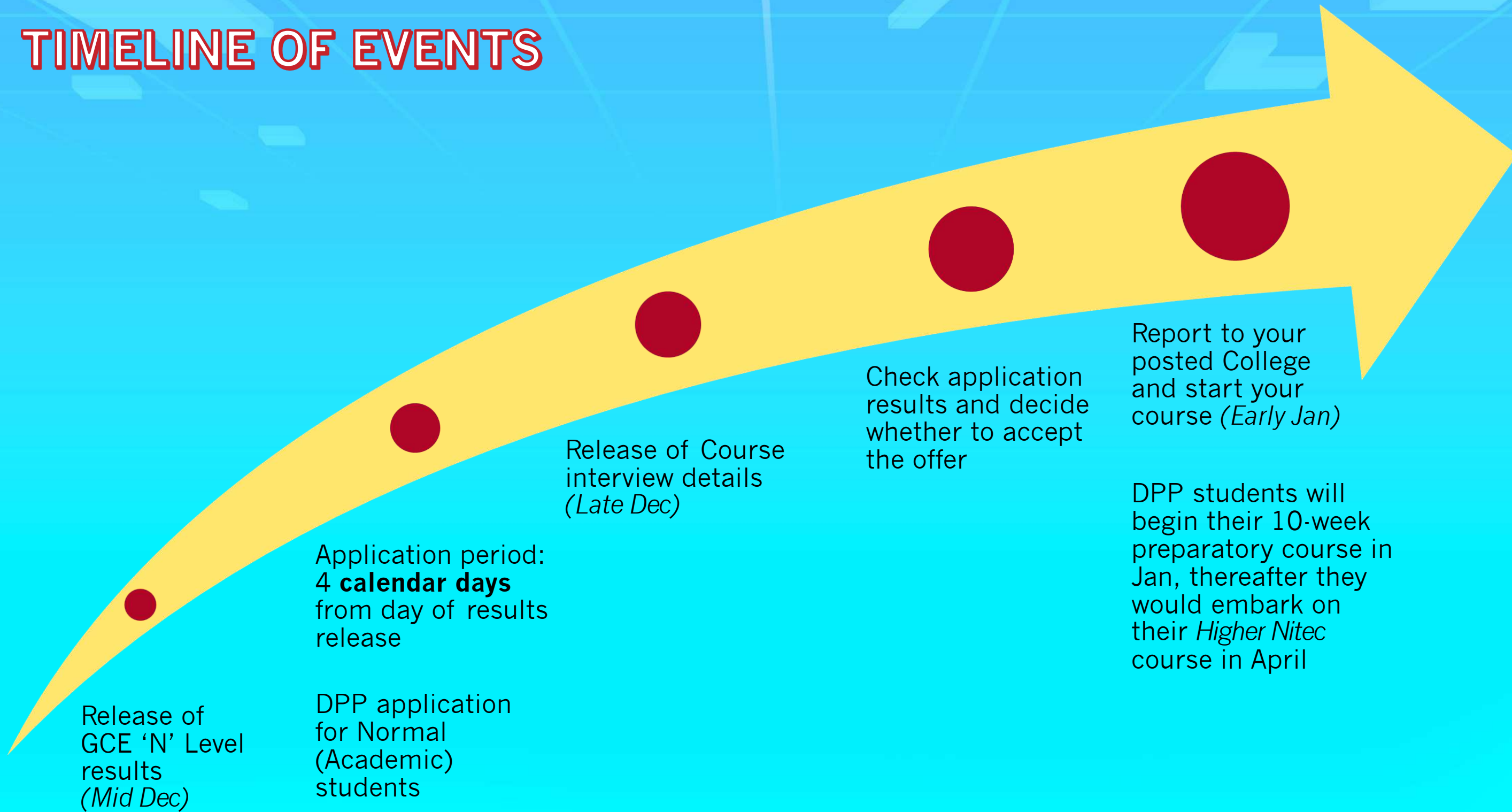
Based on Best 4 GCE 'N' Level subjects, including pre-requisite subjects and bonus points[^].

2-Year <i>Nitec</i> Course	
Engineering	
Aerospace Machining Technology (CC)	17
Digital & Precision Engineering (CC)	15
Mechatronics & Robotics (CC / CW)	15 (CC) 17 (CW)
Rapid Transit Technology (CW)	16
Automotive Technology (CW)	11
Mechanical Technology (CC / CE / CW)	13 (CC) 20 (CE) 16 (CW)
Aerospace Technology (CC)	16
Aerospace Avionics (CC)	16

CC - College Central / CE - College East / CW - College West

[^] Pre-requisite subjects: Subjects that are compulsory to pass in order to qualify for a course | Bonus points: CCA bonus points

TIMELINE OF EVENTS



CHECK OUT OUR ITE COURSE FINDER

Located at <https://www.ite.edu.sg/courses/course-finder>

The screenshot shows the ITE Course Finder web application. At the top, there is a navigation bar with the ITE logo and links for 'Who We Are', 'Colleges', 'Courses', 'Admissions', 'Life@ITE', 'Employers', and 'Newsroom'. A search icon is also present. Below the navigation bar is a large red banner with the text 'Course Finder'. Underneath the banner, there is a breadcrumb trail: 'Home > Courses > Course Finder'. The main content area is divided into a left sidebar and a main search area. The sidebar contains a 'FILTER' section with a 'Reset' button and several dropdown menus for 'Type of course', 'Schools', 'Certification', 'Location', and 'Industry'. The main search area features a search input field with the placeholder text 'Search for courses' and a search icon. Below the search field, it displays '1 - 10 of 508 search results' and a 'Sort by: Course' dropdown menu. A legend below the search results identifies location markers: HQ (ITE Headquarters), CC (ITE College Central), CE (ITE College East), CW (ITE College West), and O (Others). The first search result is for the 'Higher Nitec in Accounting' course, which has a duration of 2 years, is a full-time course, and is available at CC, CE, and CW locations. A brief description of the course is provided below the details.



Scan to find out more!

ITE DIPLOMAS (FOR ITE GRADUATES)

ITE OFFERS DIPLOMAS!

We have **two** types of Diploma programmes:
Work-Study Diploma and **Technical Diploma**

Our Diplomas fulfil the aspirations of our **Nitec** and **Higher Nitec** graduates for academic and career progression.

Students particularly value the **hands-on training** offered by these Diplomas, and our graduates experience **strong employment prospects**, with opportunities to **continue their education** at local universities.



WHY ITE DIPLOMAS?

WORK-STUDY DIPLOMA (WSDIP)

- 2.5 to 3-year apprenticeship-based programme for WSDIP
- Curriculum co-designed with industry
- Earn a competitive starting salary and enjoy employee benefits
- Deepen skills through structured workplace learning and mentorship
- Get a fully-sponsored and nationally-recognised Diploma
- Opportunity for further academic progression
- Sign-on incentive of \$5,000*
- \$10,000 CPF Ordinary Account top-up (ITE Progression Award)

TECHNICAL DIPLOMA (TD)

- 2 to 2.5 years of full-time study
- Curriculum co-designed with leading international Vocational Training and Education institutions
- Overseas learning experience in France, Germany, Hong Kong or Switzerland (depending on the course of study)
- Jointly certified by ITE and the partner institution
- Opportunity for further academic progression
- \$10,000 CPF Ordinary Account top-up (ITE Progression Award)
- \$5,000 into Post-Secondary Education Account (PSEA)

* For fresh ITE graduates from relevant feeder courses who are Singapore Citizens and within three years of their graduation or Operationally Ready Date. Terms and conditions apply.

ITE Technical Diploma (International Partners)



Technical Diploma in Culinary Arts with Restaurant Management



Baden-Württemberg
MINISTERIUM FÜR KULTUS, JUGEND UND SPORT
(Germany)

Technical Engineer Diploma in Automotive Engineering
Technical Engineer Diploma in Machine Technology
Technical Engineering Diploma in Electrical Engineering
(Clean Energy)



(Hong Kong)

Technical Diploma in Beauty & Wellness Management
Technical Engineer Diploma in Civil & Structural Engineering
Technical Diploma in Health & Exercise Coaching



Technical Diploma in Hospitality & Hotel Management

“At ITE, I discovered a passion for culinary arts and the joy of bringing people together through food. This experience **ignited my dream** to open an eatery where I can share my love for cooking and create a welcoming space for the community.”



LIEW XIAO XUAN
*Hawkerpreneur
& Owner of
'Liu Kou Shui'
TD in Culinary Arts*

LIST OF WORK-STUDY DIPLOMAS

Business Sector
Accountancy
Airport Operations
Community Engagement & Development
Culinary Arts & Management
Customer Experience Management (Aviation Services)
Customer Experience Management (Cabin Services) NEW
Customer Experience Management (Lifestyle & Consumer)
E-Commerce & Retail
Event Management
Fitness Management
Hotel & Restaurant Management
Human Resource Management NEW
Lifestyle & Recreation Management
Logistics & Supply Chain Management
Patient Management & Services
Security Operations
Tourism Management

Engineering Sector
Agriculture & Aquaculture Technology
Aircraft Cabin Engineering
Aircraft Engine Maintenance
Aircraft Maintenance Engineering
Arboriculture & Horticulture
Architectural BIM & Design
Automation Engineering
Chemical Process Technology
Electrical Engineering
Facilities Management
Land Transport Engineering (Rail)
Land Transport Engineering (Operations Management) NEW
Land Transport Engineering (Vehicle)
Marine & Offshore Engineering (Engineering Design)
Marine & Offshore Engineering (Production)
Mechanical & Electrical Services Supervision
Mechanical Systems Engineering
Microelectronics (Equipment)
Microelectronics (Process)
Port Automation Technology (in-service only)
Security Systems Engineering
Vertical Transportation

Information & Digital Sector
AI & Data Intelligence (AI)
AI & Data Intelligence (Data Engineering)
Cloud Management & Operations (Cloud Operations)
Cloud Management & Operations (Infrastructure Support)
Cyber Security & Forensics
Data Centre Infrastructure & Operation
Electronics & Computer Engineering (Applied Electronics & AI)
IT System Integration

Arts, Design & Media Sector
Media Communication & Digital Marketing

Health Science Sector
Community Care Integration & Management NEW
Nursing (in-service only)
Opticianry
Paramedicine NEW
Rehabilitation Care

Over **40** WSDip Courses across 5 Sectors!



CO-CURRICULAR ACTIVITIES

Arts

Acoustic Pop Band
K-Pop Dance
Magic Club
Photography
Sand Animation
Visual Arts

Community

Care & repair club
Community service club
Rotaract club
Safe home club

Sports & Games

Archery
Cycling
Karate
Rock Climbing
Swimming
Volleyball

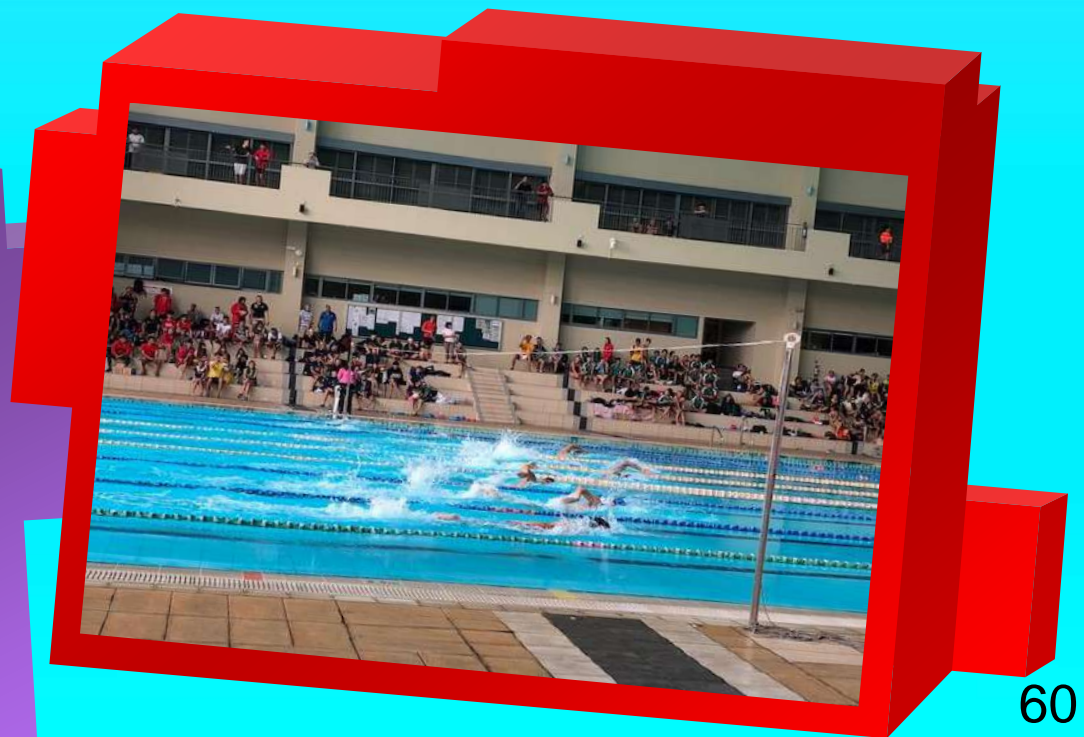
Leadership

Bridge Leaders
Peer Support Leaders
Student Council
Student Icons

Innovation & Enterprise

3D Printing Club
Cyber Games Club
Entrepreneurship Club
Investment Club
Robotics Club

JUST SOME EXAMPLES!



DISCOVER ITE

Customer & Visitor Centres

ITE HQ & College Central

Address: Blk A, Level 2, 2 Ang Mo Kio Drive, Singapore 567720

Tel: 6590 2211

Email: college_central@ite.edu.sg

ITE College East

Address: Administration Block, Level 1, 10 Simei Ave, Singapore 486047

Tel: 6590 2262

Email: college_east@ite.edu.sg

ITE College West


Address: Blk 2, Level 2, 1 Choa Chu Kang Grove, Singapore 688236

Tel: 6590 2628

Email: college_west@ite.edu.sg

*All Centres are open from 8:30am – 6:00pm,
Mondays to Fridays (closed on Weekends and Public Holidays)

© Institute of Education, Singapore (2025). All rights reserved. No part of this publication may be reproduced, distributed, stored in retrieval system, or transmitted in any form or by any means, including photocopying, recording or other electronic and mechanical methods, without the prior written permission of the Institute of Technical Education, Singapore.

 www.ite.edu.sg


 facebook.com/ITESpore

 instagram.com/itespore

 tiktok.com/@itesingapore

 youtube.com/itespore

 x.com/ITESpore

 linkedin.com/school/ite-spore